

# Green Laser Module

## Wide Temperature Range

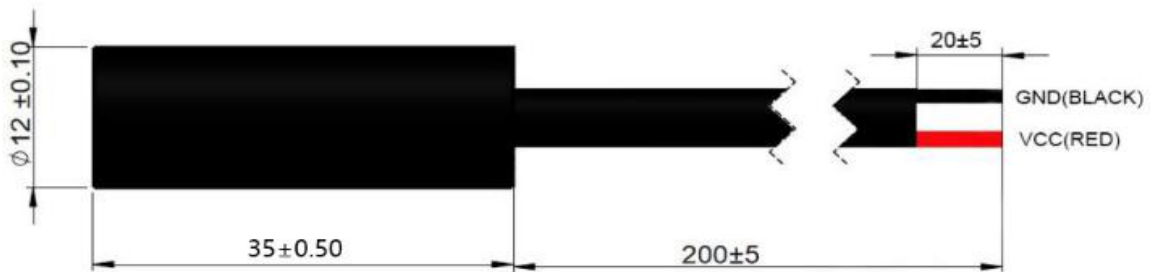


**G545D010-12x35-1.0-(0-40)-10**

### Features

- Fast Rise Time
- High Reliability
- Isolated Housing
- Wide Temperature Range

### Dimensions (Unit: mm)



### Specifications

Model Number		G545D010-12x35-1.0-(0-40)-10		
Mechanical Specifications		Min	Typ	Max
Laser Head	Diameter (mm)	11.9	12	12.1
	Length (mm)	34.5	35	35.5
	Weight (g)	-	20	-
Housing Material		Black Anodized Aluminium		
Optical Specifications		Min	Typ	Max
Wavelength (nm)		544	545	546
Output Power (mW) <sup>(1)</sup>		7.5	10	12.5
Power Stability at const. Temperature <sup>(2)</sup>		-	+/- 2%	+/- 5%
Output Power Mode		CW		
Laser Class		3B		

(1) over Temperature Range of 0 to 40 °C

(2) after max. 3 minutes

<b>Beam Specifications</b>		<b>Min</b>	<b>Typ</b>	<b>Max</b>
Beam Divergence (mrad) <sup>(1)</sup>		-	0.5	1.0
Beam Alignment Tolerance	Position ( $\Delta r$ , mm) <sup>(2)</sup>	-	0.3	0.5
	Off-axis Angle (mrad) <sup>(3)</sup>	-	20	30
Beam Diameter at Output Window (mm)		-	-	2.0
Beam Roundness		70%	-	100%
Beam Mode Longitude		Multi		
Beam Mode Transverse		TEM00		
M <sup>2</sup>		-	1.2	1.4
Polarization Ratio		100:1	-	-
Residual IR (%)		-	-	1%
<b>Electrical Specifications</b>		<b>Min</b>	<b>Typ</b>	<b>Max</b>
PCB Type		APC		
Voltage (DC, V)		2.5	-	6
Operating Current (mA) at 3V <sup>(4)</sup>		-	250	400
Housing Isolation		Yes		
ESD protection		No		
Wire Length (mm)		200 +/- 5		
Wire Type		AWM STYLE 22AWG <sup>(5)</sup>		
Connector Model		None <sup>(5)</sup>		
Reverse Voltage Protection		Yes		
<b>Reliability</b>		<b>Min</b>	<b>Typ</b>	<b>Max</b>
Operating Case Temperature Range (°C)		0	-	40
Rise Time (Seconds) <sup>(7)</sup>		-	0.2	0.5
Storage Temperature (°C)		-20	-	60
Environmental Humidity (RH, %)		5	-	85
Lifetime (hours) (MTTF at 25°C)		10,000	-	-
RoHS Compliance Declaration		Yes		

(1) Full Angle ( $1/e^2$ )

(2) at Output Window

(3) Full Angle

(4) over Operating Case Temperature

(5) Optional: Alternative Wire Types & Connector Models on demand

(6) to 75% of full Output Power

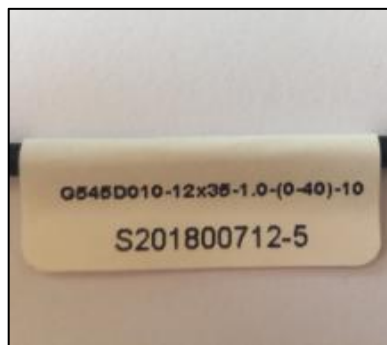
## Remarks

- Datasheet Version 1
- Reverse Voltage Protection
- Customer is responsible for suitable heat sinking
- All wires are AWM STYLE 22AWG.
- Label around wires (see label in picture 2):
  - Lasence Model Number
  - Lasence Order Number - Module Number
  - Label length: 30mm (+/-3mm)
- Label on plastic bag (see label in picture 3):
  - LASENCE®
  - G545D010-12x35-1.0-(0-40)-10
  - Lasence Order Number - Module Number
  - Label Length: 30mm (+/-3mm); Width: 25mm (+/-3mm)
- **Optional:**
- Shock
  - 1000g, 1ms, 6 shocks (3 axes, 2 shocks/axis)
- Vibration
  - 20 ~ 200Hz, 0.02g<sup>2</sup>/Hz (3 axes, 1h/axis)
- Laser Beam Warning Label on module housing (see picture 1)

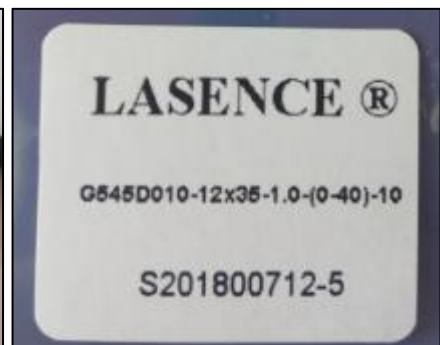
**Picture 1**



**Picture 2**

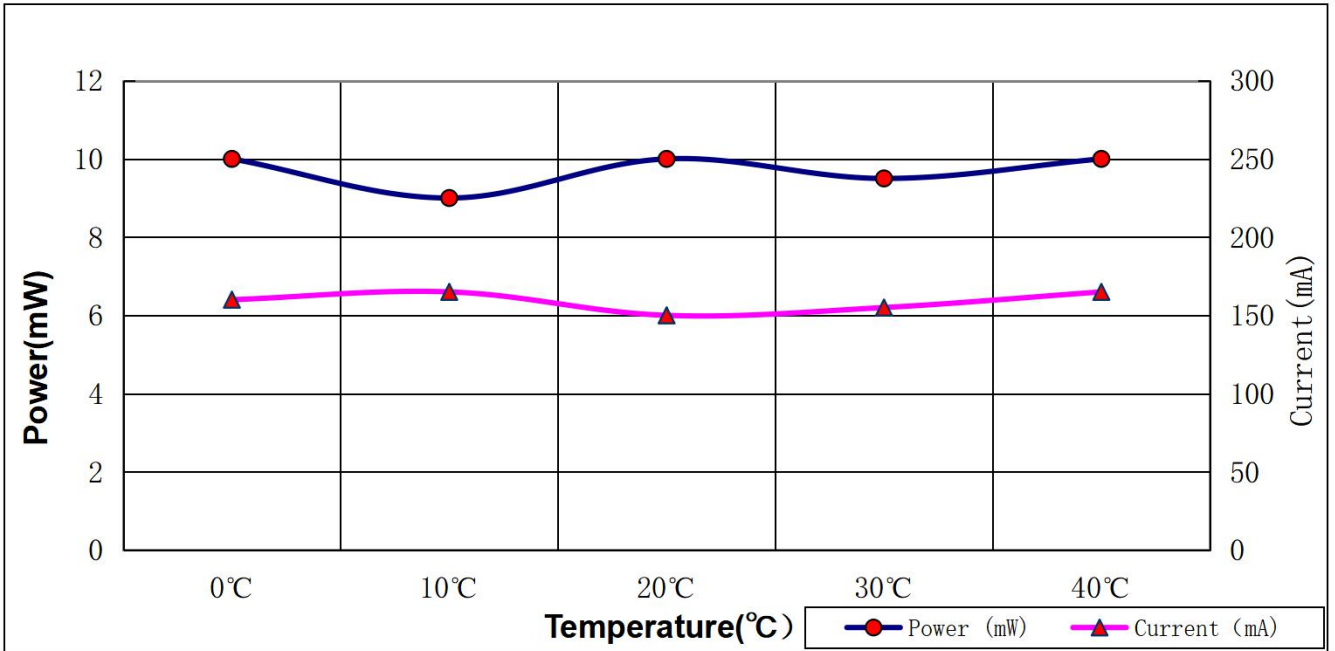


**Picture 3**



## Typical Output Performance (examples)

### 1.) Power / Current vs. Case Temperature



### 2.) Power vs. Time (at 25°C Case Temperature)

