

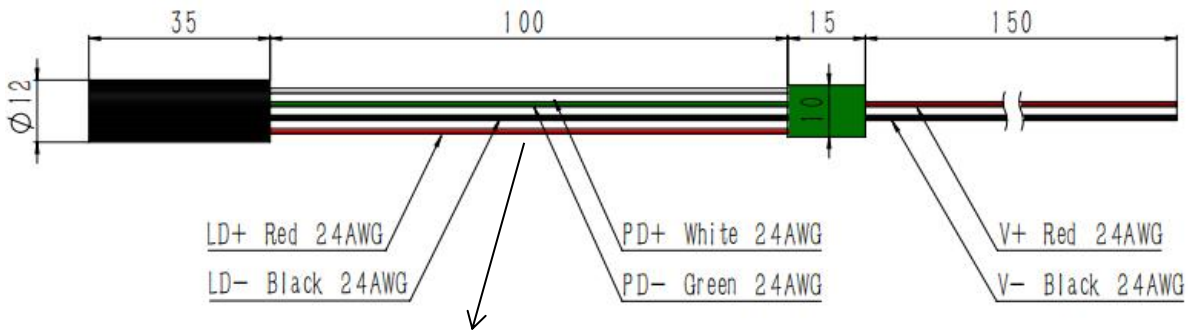


Y561D015-12x35-2.5-A

Features

- DPSS Laser
- 561nm yellow laser
- Fast Rise Time
- High Reliability

Dimensions (Unit: mm)



- 4 wires will be twisted together and part will be with heat shrink tube.
- PCB will be also with heat shrink tube.

Specifications

Model Number		Y561D015-12x35-2.5-A		
Mechanical Specifications		Min	Typ	Max
Laser Head	Diameter (mm)	11.95	-	12.05
	Length (mm)	-	35	-
	Weight (g)	-	-	50
Housing Material		Black Anodized Aluminum		
Optical Specifications		Min	Typ	Max
Wavelength (nm)		559	561	563
Output Power (mW) at 25°C		10	15	-
RMS Power Stability at const. Temperature ⁽¹⁾		-	+/- 1%	+/- 3%
Output Power Mode		CW		
Laser Class		3B		

⁽¹⁾ after max. 3 minutes

Beam Specifications		Min	Typ	Max
Beam Divergence (mrad) ⁽¹⁾		-	-	2.5
Beam Alignment Tolerance	Position (Δr , mm)	-	-	0.5
	Off-axis Angle (mrad)	-	30	35
Beam Diameter at Output Window (mm)		-	0.5	-
Beam Size at 10m (mm)				25
Beam Roundness		-	70%	-
Beam Mode Longitude		Multi		
Beam Mode Transverse		TEM ₀₀		
Polarization Ratio (Linear)		100:1	-	-
Residual IR		-	-	3%
Electrical Specifications		Min	Typ	Max
Power Type		APC		
PCB Voltage (DC, V)		-	3	-
PCB Operating Current (mA) at 3V		-	300	400
Power Consumption (W) at 25°C		-	0.9	1.2
Housing Isolation		No		
ESD protection		No		
Wire Length (mm) ⁽²⁾		150(+/-20)		
Wire Type		24AWG		
Reliability		Min	Typ	Max
Operating Case Temperature Range (°C) ⁽³⁾		15	25	35
Rise Time (seconds)		-	-	0.1
Storage Temperature (°C)		0	-	40
Environmental Humidity (RH, %)		5	-	85
Lifetime (hours) (MTTF at 25°C)		5,000	-	-
RoHS Compliance Declaration		Yes		

⁽¹⁾ Full Angle (1/e²)

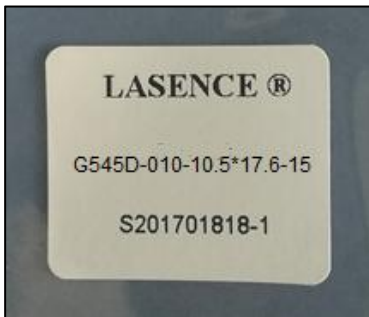
⁽²⁾ Optional: Alternative Wire Types on demand

⁽³⁾ A = 15-35 °C, B = 10-50 °C, C = 0-40 °C, D = -10-50 °C, E = -30-50°C

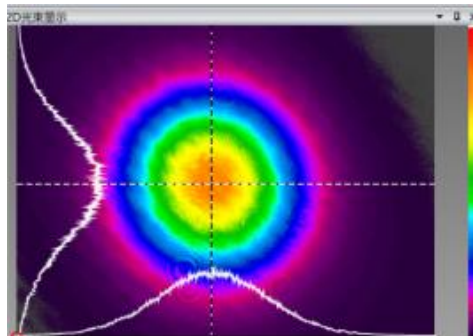
Remarks

- Product ID for placing orders: Y561D015-12x35-2.5-A
- Datasheet Version: 1
- Photodiode
- Customer is responsible for suitable heat sinking
- Label on plastic bag (see picture of another product's label in picture 1):
 - LASENCE®
 - Y561D015-12x35-2.5-A
 - Lasence Order Number - Module Number
 - Label Length: 30mm (+/-3mm); Width: 25mm (+/-3mm)
- Example of beam spot (see picture 2)
 - Lasence Material Code
 - Lasence Order Number - Module Number

Picture 1

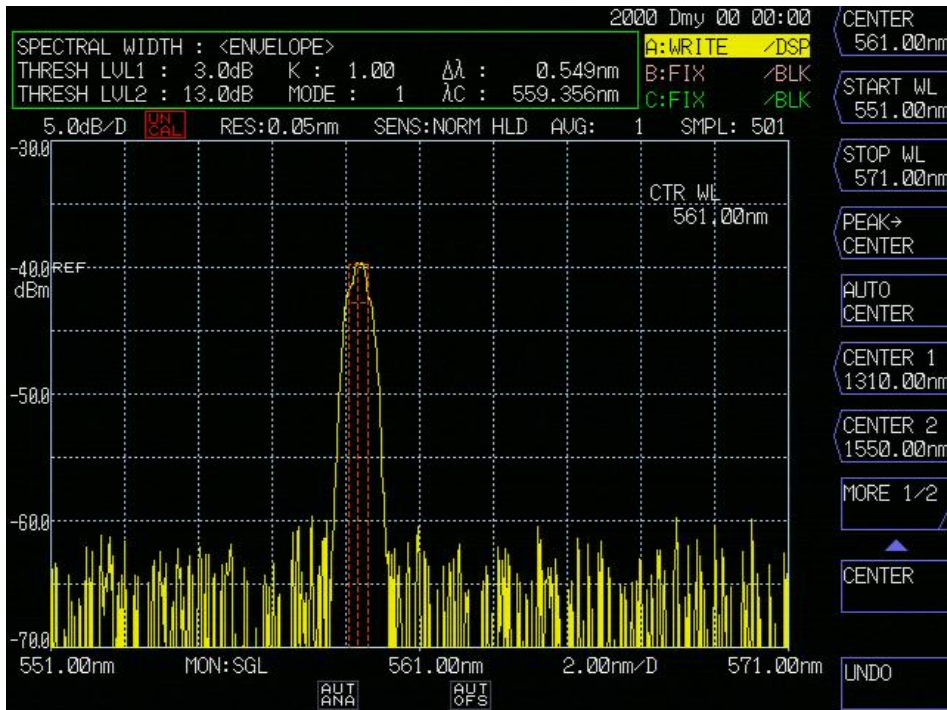


Picture 2



Typical Output Performance (examples)

1.) Wavelength



2.) Power stability over temperature range

